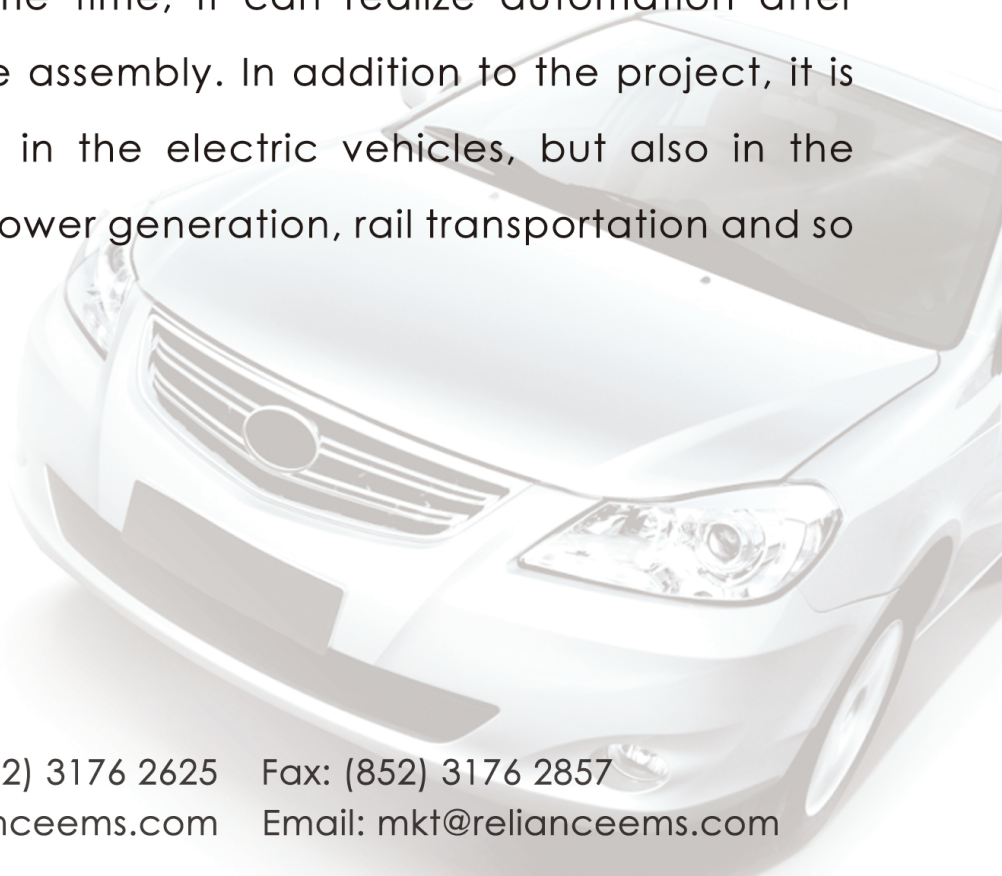


Special PCB for electric vehicles

"Special printed circuit board for electric vehicles" is a new technological innovation R&D project, putting high-voltage power distribution and low-voltage control integrated modular together to achieve strong-weak current integration in one printed circuit board. This can successfully replace the original high voltage distribution box busbar / copper + wiring harness of the traditional structure in electric vehicle, and solves the defects of safety, efficiency and space in the traditional structure. At the same time, it can realize automation after modularization of the assembly. In addition to the project, it is not just widely used in the electric vehicles, but also in the ship-driven, energy power generation, rail transportation and so on.



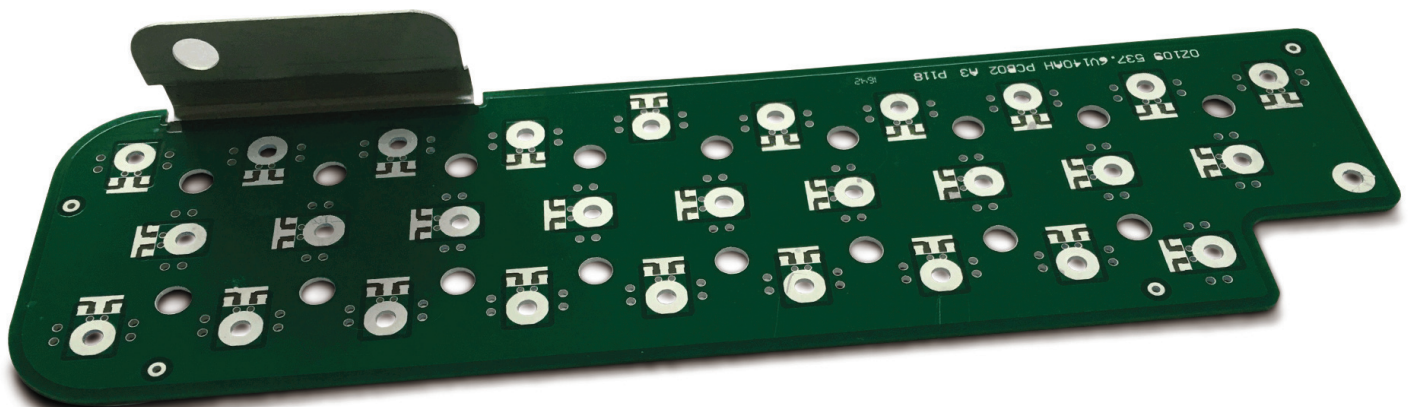
Tel: (852) 3176 2625 Fax: (852) 3176 2857

Website: www.relianceems.com Email: mkt@relianceems.com

Special PCB for electric vehicles

Brief target of product performance:

- 1 Breakdown voltage $\geq 10000\text{VAC}$;
- 2 Insulation layer pressure $\geq 3000\text{VDC}$;
- 3 Thermal stress $288\text{ }^{\circ}\text{C}$, 10 seconds, 5 times without white spots, stratification, blistering, cracks and other phenomena;
- 4 Temperature $130\text{ }^{\circ}\text{C}$, for 24 hours without white spots, stratification, blistering, cracks and so on;
- 5 $-45\text{ }^{\circ}\text{C}$ to $145\text{ }^{\circ}\text{C}$ hot and cold cycle 500 times without white spots, stratification, blistering, cracks and so on;
- 6 Current 480A, 12 hours without white spots, stratification, blistering, cracks and so on.



Tel: (852) 3176 2625 Fax: (852) 3176 2857

Website: www.relianceems.com Email: mkt@relianceems.com